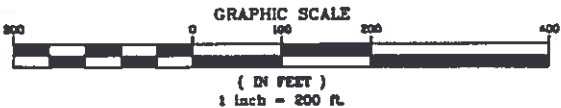


DISTRICT BOUNDARIES

LOCATED IN THE NORTHEAST QUARTER OF SECTION 6, TOWNSHIP 4 SOUTH,
RANGE 66 WEST OF THE SIXTH PRINCIPAL MERIDIAN
CITY OF AURORA, COUNTY OF ARAPAHOE, STATE OF COLORADO



PARCEL 1 & PARCEL 3
POINT OF BEGINNING

COLFAX AVENUE
(BASIS OF BEARINGS)

S 89°58'13" E 363.06'

PARCEL 2
POINT OF BEGINNING

S 89°58'13" E 100.00'

S 00°10'56" E 132.11'

N 00°10'58" W 131.74'

PARCEL 1
295,484 S.F. ±
6.7834 AC. ±

LOT 1, BLOCK 1
LEN LYALL SUBDIVISION FILING NO. 1
RECEPTION NO. 1627472

N 00°18'17" W 828.81'

N 81°16'32" W
PARCEL 3
149,918 S.F. ±
3.4416 AC. ±
S 81°16'32" E

PARCEL 2
821,931 S.F. ±
18.8690 AC. ±

SABLE AVENUE

N 00°18'15" W 60.00'

S 89°52'14" E 500.02'

BLOCK 5
CHAMBERS HEIGHTS, FIFTH FILING
BOOK 18, PAGE 79

N 89°52'13" W 1889.31'

BLOCK 6
CHAMBERS HEIGHTS, FIFTH FILING
BOOK 18, PAGE 19

EAGLE STREET

SEE SHEET 2

CURVE TABLE

CURVE	DELTA	RADIUS	LENGTH	CHORD BEARING	CHORD
C1	81°05'34"	200.00'	283.07'	S 40°43'45" E	260.03'
C6	81°05'34"	100.00'	141.53'	N 40°43'45" W	130.01'

NOTE:

● DENOTES CHANGE OF DIRECTION ONLY. THIS EXHIBIT DOES NOT REPRESENT A MONUMENTED SURVEY. IT IS INTENDED ONLY TO DEPICT THE ATTACHED LEGAL DESCRIPTION.



8008 E. Arapahoe Court, Suite 110, Greenwood, CO 80119 ph:303.708.0800 f:303.708.0400 manhard.com
Civil Engineers • Surveyors • Water Resource Engineers • Water & Wastewater Engineers
Construction Managers • Environmental Scientists • Landscape Architects • Planners

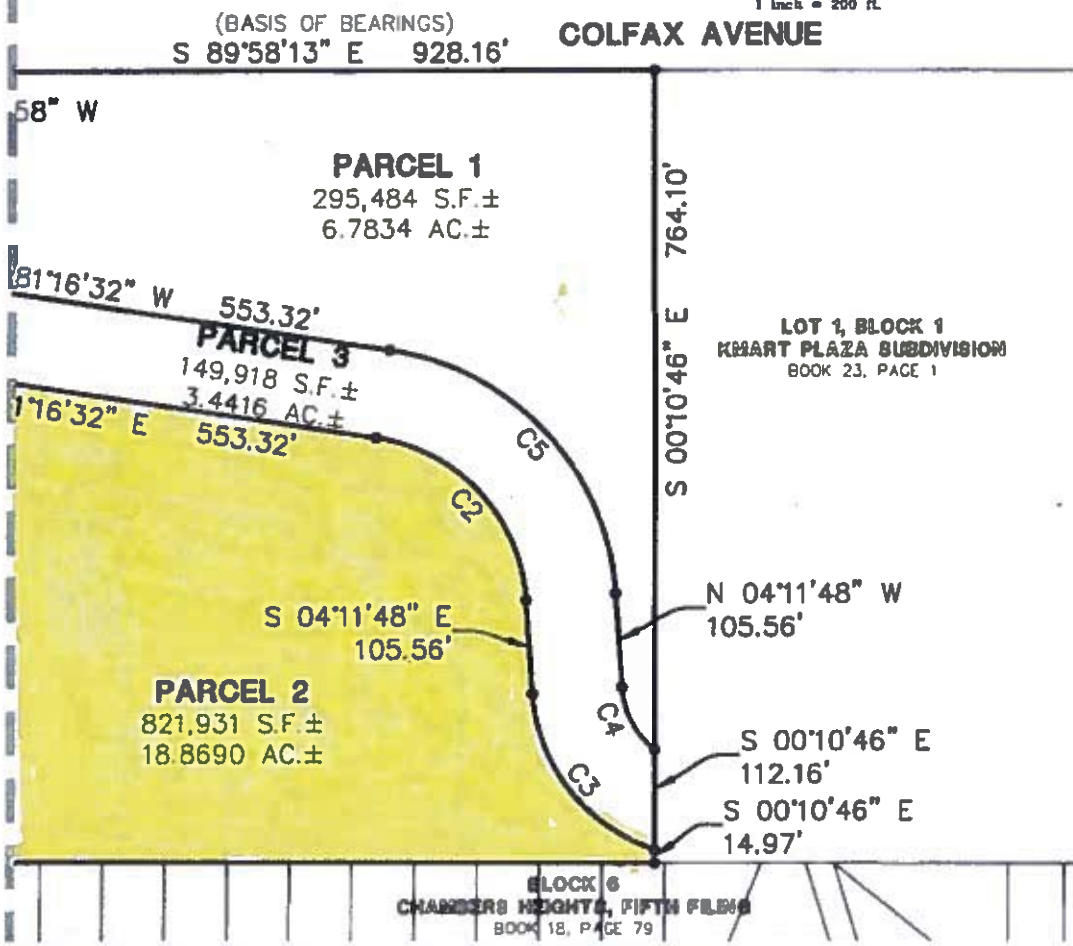
MONTEREY POINTE SUBDIVISION
CITY OF AURORA, ARAPAHOE COUNTY, COLORADO

PROJ. NO.: 636
DRAWN BY: GDP
DATE: 11/28/16
SCALE: 1" = 200'

11/28/2016 9:57 AM Dwg Name: P:\Monocore01\dwg\Surv\Final Drawings\Exhibits_Surv\MON_AUR001.00-SI 2.dwg Updated By: GPuckett

DISTRICT BOUNDARIES

LOCATED IN THE NORTHEAST QUARTER OF SECTION 6, TOWNSHIP 4 SOUTH,
RANGE 86 WEST OF THE SIXTH PRINCIPAL MERIDIAN
CITY OF AURORA, COUNTY OF ARAPAHOE, STATE OF COLORADO



CURVE TABLE

CURVE	DELTA	RADIUS	LENGTH	CHORD BEARING	CHORD
C2	77°04'44"	200.00'	269.06'	S 42°44'10" E	249.22'
C3	67°37'11"	200.00'	236.04'	S 38°00'24" E	222.58'
C4	46°55'38"	100.00'	81.90'	N 27°39'37" W	79.63'
C5	77°04'44"	300.00'	403.58'	N 42°44'10" W	373.83'

NOTE:
● DENOTES CHANGE OF DIRECTION ONLY. THIS EXHIBIT DOES NOT REPRESENT A MONUMENTED SURVEY. IT IS INTENDED ONLY TO DEPICT THE ATTACHED LEGAL DESCRIPTION.



8208 E. Arapahoe Court, Suite 110, Denver, CO 80118 ph303.708.0800 fax303.708.0400 manhard.com
Civil Engineers • Surveyors • Water Resources Engineers • Water & Wastewater Engineers
Construction Managers • Environmental Scientists • Landscape Architects • Planners

MONTEREY POINTE SUBDIVISION
CITY OF AURORA, ARAPAHOE COUNTY, COLORADO

PROJ. MGR.: BJP
DRAWN BY: GDP
DATE: 11/28/16
SCALE: 1" = 200'

11/28/2016 9:57 AM D:\Home\p\Manhard\01\Draw\Surv\Engl Drawings\Exhibits_Surv\MON AUC001.00-SI.2.dwg Updated By: GPuckett